

HM-418, HM-419 Data Readout GetData Software

INTRODUCTION

Data Readouts display real-time data from load, displacement, and pressure transducers on different channels. These units are available with either two or four channels, with each channel capable of converting from analog to digital (A/D) and producing readings simultaneously without time delay errors. Data is transmitted from the Mini USB port to Windows XP, 7, 8, or 10 operating systems. The included GetData 5 software captures and displays data on a PC and can export files to a spreadsheet program such as Excel.

The high-resolution LCD screen is back lit and can display two lines with up to 16 characters. Keys located on the front panel allow users to select tare on a channel, view peak readings of a channel, or enter calibration factors when changing transducers.



HM-418

INCLUDED ITEMS

Data Readout, two or four channel
Power Cord
Mini USB to USB cord
Get Data Software on Flash Drive

QUICK START GUIDE

Plug in the included flash drive to access the GetData54.exe software file, Instruction Manual, Serial Port Information, Sensor Connection Drawing, and Calibration Instructions. If you purchased your Data Readout with a Load Cell or Displacement Transducer these units were calibrated together before shipping.

INSTALLATION

1. Download the GetData software and manuals to your computer. It is recommended to save the GET-DATA54.EXE to your desktop.
2. Install the driver for the USB to Serial Adapter, setting up the Virtual COM Port.

Locate the Drivers folder on the Flash Drive and open, click on the folder for the version of Windows you are using, "w7-10" for Windows 7, 8, and 10. Or "xp" for Windows XP. Copy the desired driver in exe format to the computer and run the file.

3. Connect the power cord and Mini-USB to USB cord to the back of the Data Readout box. Plug in the box and turn on the power. A notification should appear on your computer showing a new device has been found. If desired, you can use the device manager in the control panel of your computer to examine the "Ports: Com and LPT" to view the status and determine the COM port number.

Rev: 09/2020

4. Manually Configure the Serial Port. The first time the program is run, the default serial port configuration is used to find the readout. If failure occurs the port must be configured correctly. Make sure readout is connected to the computer and turned on. Click File > Configure Serial Port. The configuration dialog appears (figure 1)

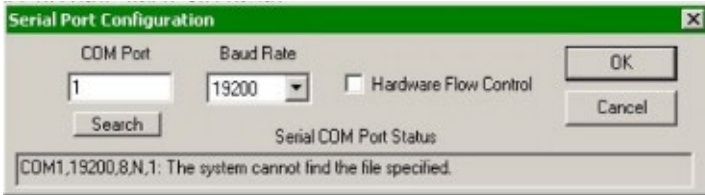


Figure 1

Press the Search button. The program will scan all COM ports until the readout is identified. This is shown as DEVICE FOUND in the message bar. If a serial port is not found, double check Mini USB to USB connections and press Search again. After the device is located, press OK.

The main window will update its messages to show success. The port configuration will be saved automatically, and this will be used the next time the program is started.

Please contact Gilson Technical Support with any problems or questions, techsupport@gilsonco.com